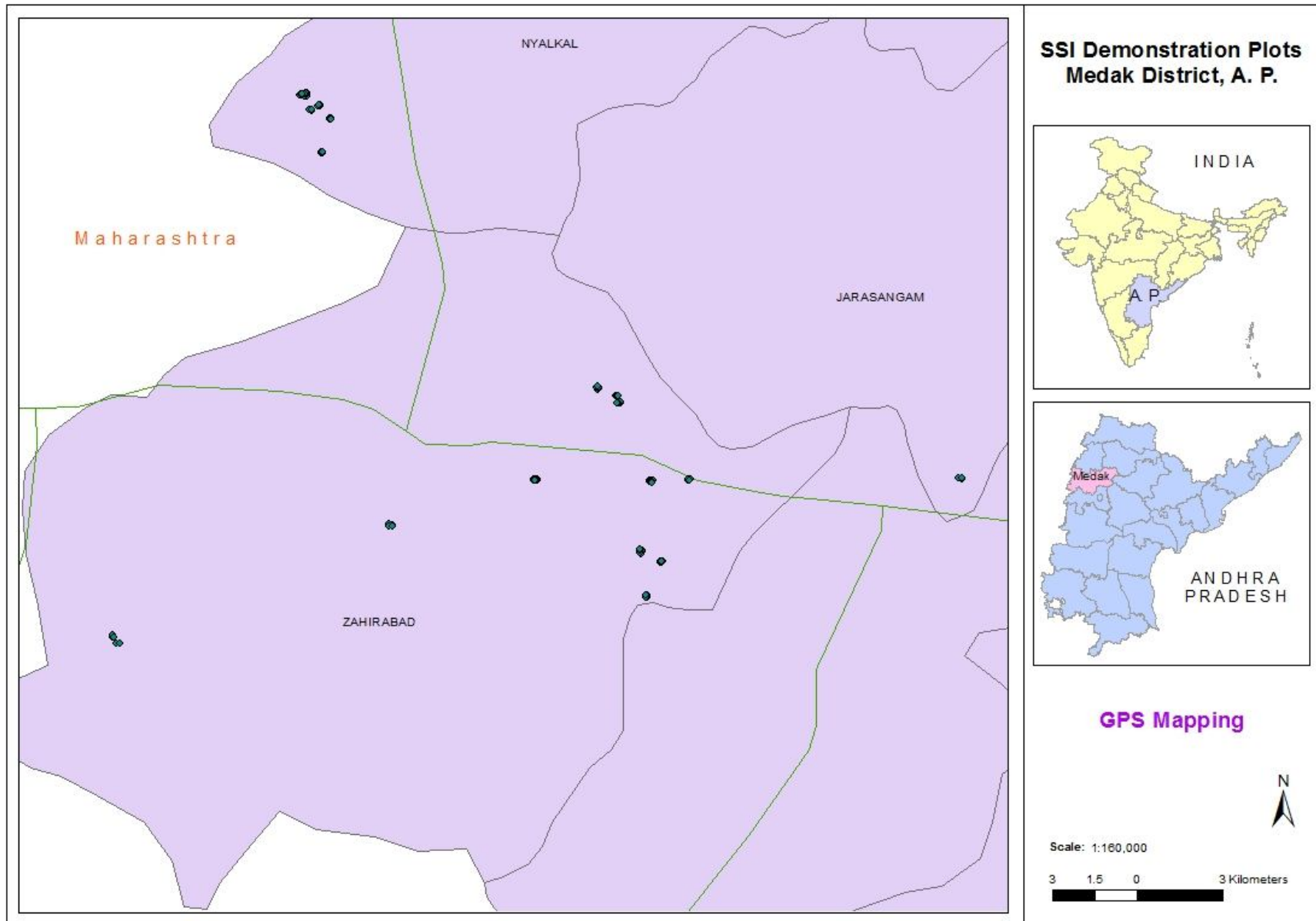


SSI Experiences in Medak, Andhra Pradesh, India

Dr. Padmaja Karanam,
AIP-ICRISAT

SSI Location in Medak, AP, India



Experiences

- **Intercultural operations - easy**
- **less labour**
- **Easy watering- drip setup- saved on water**
- **Wider spacing –**
 - **farmers assumed yield loss**
 - **tractor operation easy**
- **Late planting effects.**
- **Intercrops and additional income.**



Yield attributes

Parameter	SSI practice		Conventional practice	
	Range	Average	Range	Average
Tillers per clump	8 - 18	10	5 - 8	6
Millable canes per clump	6 - 14	9	4 - 6	5
Individual cane weight (kg)	1.5 – 2.6	1.9	1.2 – 1.6	1.4
Yields (t/acre)	46 - 68	57.5	35 - 45	40.1







SSI
Rs.72,000/acre
(Rs.57k - Rs.86k/acre)

Extra profits-SSI
Rs.34,000/acre
(Rs.19k - Rs.49k/acre)



What farmers are looking at:

- **Sugarcane nursery to be made available all through the year.**
- **Nursery units to be set up close to the farms in every village.**
- **Ensure supply of good quality sugarcane seedlings.**
- **Factory units to supply seedlings to farmers and follow up.**
- **More number and improved varieties to be made available.**
- **Continued support on SSI to the farmers; SSI experts to guide them on the practices, and trained persons to visit and support on SSI.**

Spillovers

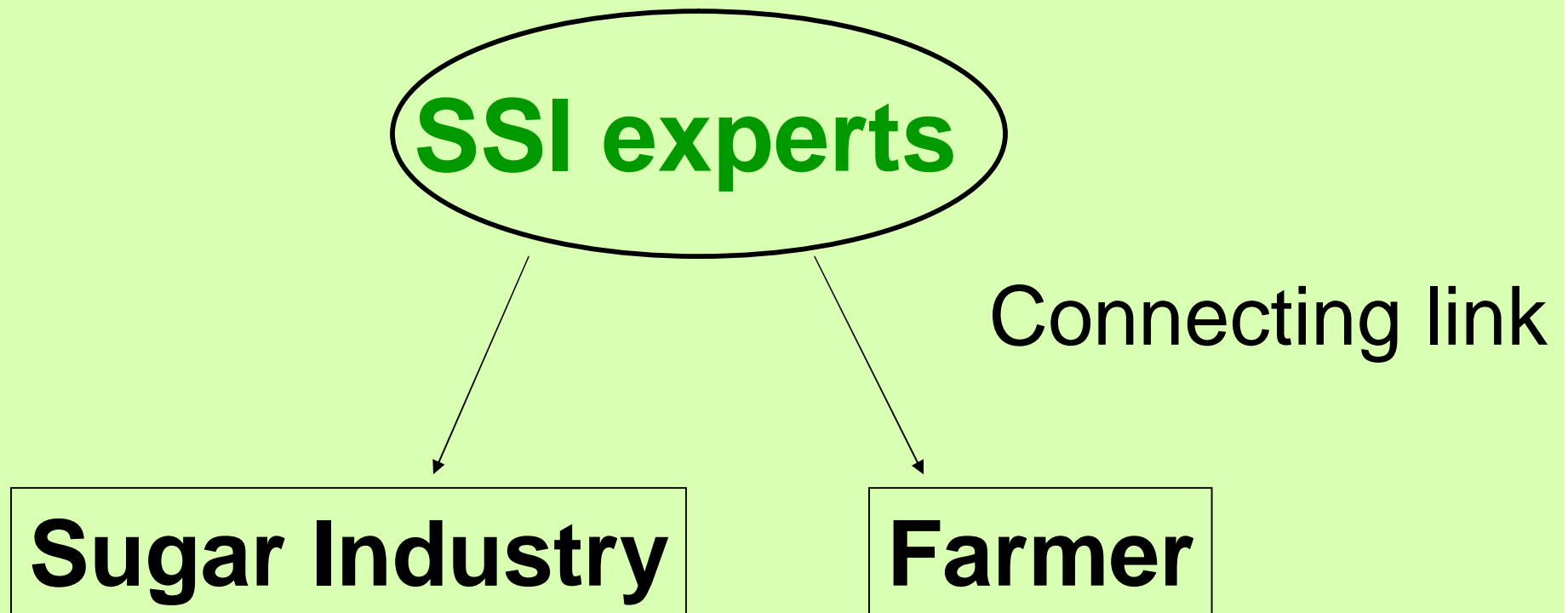
- **Adoption of components of SSI principles to other crops**
- **Microenterprises – Vermicompost units, budchip and nursery raising enterprise.**
- **Additional income generating activities through nursery raising especially for women and self help groups.**
- **Rural employment opportunities.**



For enhancing cane productivity through SSI

- Capacitate farmers, provide hand holding support on the SSI methodology
- Ensure availability of good quality seedling nursery during planting season.
- Factory units could tie up with nursery sellers to provide timely seedlings to the farmers.
- Processes that would decrease the cost of the nursery.
- Suitable varieties to be made available for the region
- Setting up of SSI supporting microenterprises that would create additional rural employment opportunities.

Opportunities and Way forward



Thank you

